



It is our mission to protect your health, but we need you to do your part.

COVID-19 Surveillance Data

Beaufort County Health Department

1436 Highland Drive, Washington, North Carolina 27889

252.946.1902

Updates are generally completed daily during the work week though some data is compiled weekly or monthly.



Thursday, September 2, 2021

| | | |
|--|--------|-------|
| Tests conducted on Beaufort county residents (to date) | 48,648 | |
| Total cases (tested positive) | 5,677 | |
| Total hospitalizations that have occurred | 281 | 4.9% |
| Total Deaths* | 108 | 1.9% |
| Average age of deaths (years) | 77.0 | |
| Known active cases currently in the county | 517 | |
| Currently hospitalized | 13 | 2.5% |
| Currently on a ventilator | 1 | |
| Total cases recovered | 5,052 | 89.0% |
| Seven (7) day average case rate | 42.4 | |
| Positive cases since June 1, 2021** | 1,013 | |
| Reinfections (positive again after recovering) | 18 | |
| Breakthrough (positive after completing vaccination)** | 98 | 10% |
| | - | |
| Deaths* from long term care facilities | 49 | 45% |

*Deaths reported through this website have been confirmed through a review of the death certificates. This validation process can sometimes take a long time when a resident passes in another County or State. Other sources may report presumptive totals and therefore will vary with those reported here.

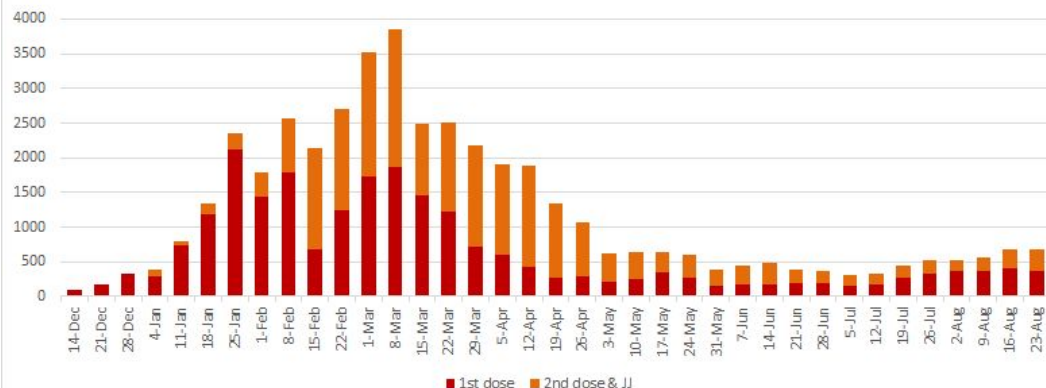
**June 1, 2021 is used as a starting point due to first breakthrough case and start of Delta Variant detected in area.

COVID-19 Vaccination Information:

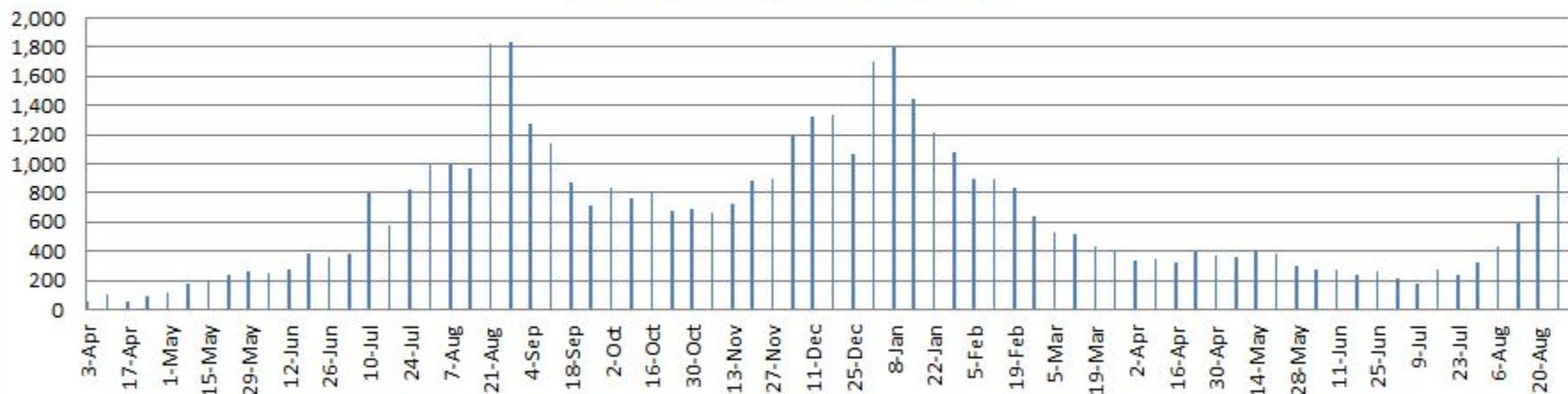
[Click Here for more Information on the COVID Vaccination](#)

| Thursday, September 2, 2021 | | Total |
|---|--------|-------|
| Beaufort County Population (NCSCHS) | 47,079 | |
| Residents that are partially vaccinated against COVID-19 | 23,356 | 49.6% |
| Completed COVID-19 vaccine series (all vaccines) | 21,286 | 45.2% |
| Total Doses administered | 44,642 | |
| Population over 65 years of age (NCSCHS) | 11,281 | |
| Over 65 that have received first dose of COVID-19 vaccine | 9,856 | 87.4% |
| Over 65 that have completed series | 9,481 | 84.0% |
| Adult Population (18 and older) | 37,758 | |
| Partially vaccinated | 22,573 | 59.8% |
| Fully vaccinated | 20,755 | 55.0% |
| 12-17 year olds vaccinated | 3,295 | |
| Partially vaccinated | 783 | 23.8% |
| Fully vaccinated | 531 | 16.1% |

Total Vaccinations Received by Beaufort County Residents per Week



Beaufort County Number of Tests Conducted (weekly totals) as of 8/27/2021



This data is compiled on Monday for the previous week's count.



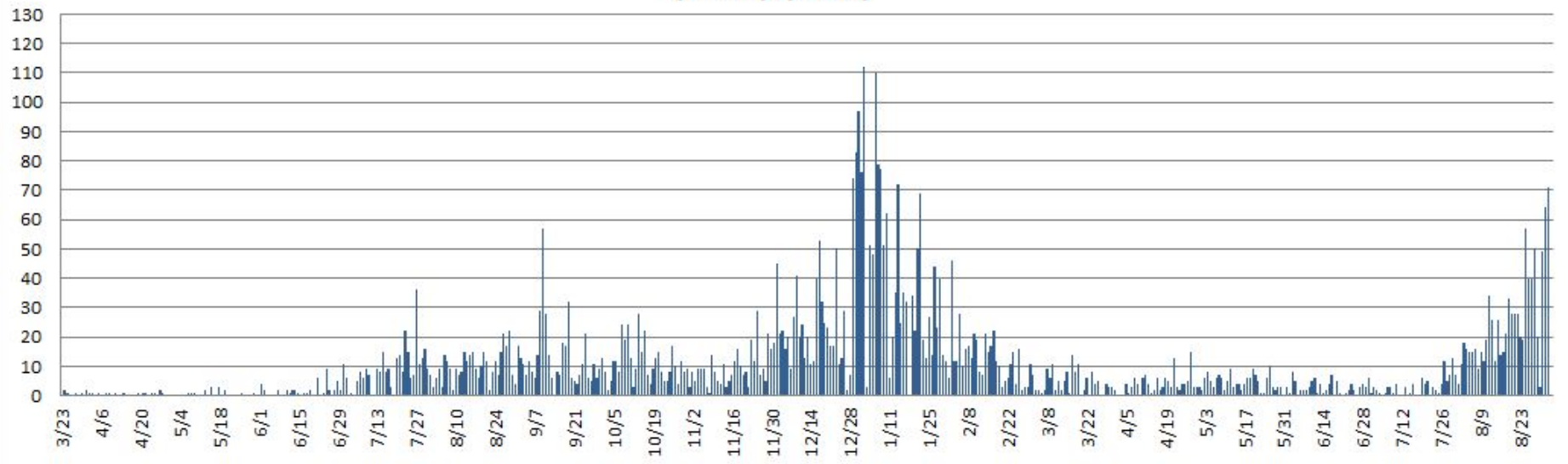
For the week ending August 27th:
13.6 % of the 1,040 residents, tested in Beaufort
County, tested positive.

**Beaufort County Percent of Tests Resulting as Positive
(Calculated weekly) as of 8/27/2021**

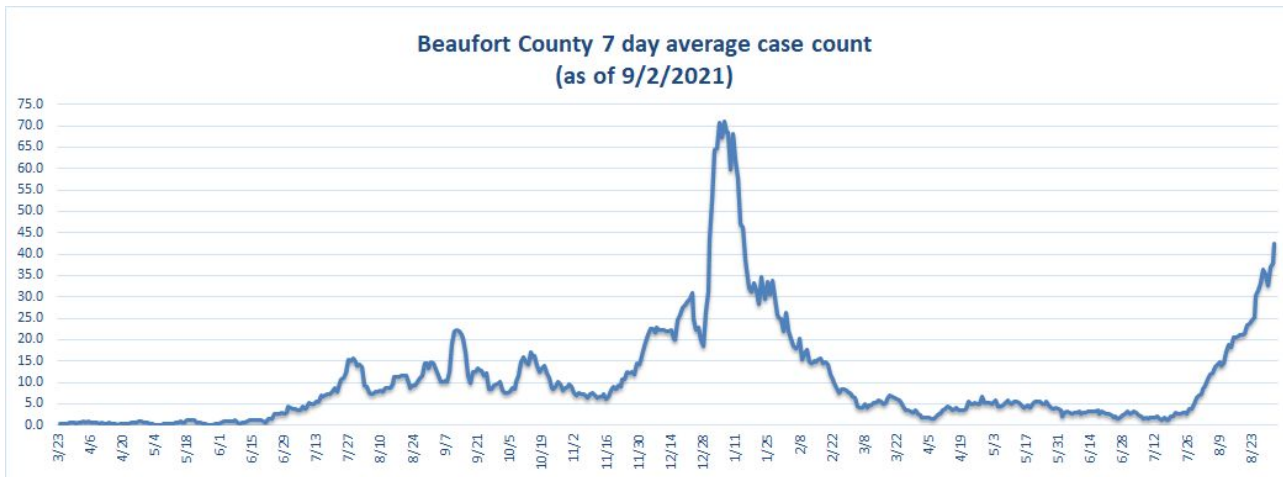


This data is compiled on Monday for the previous week's count.
Only tests conducted in the county and results known.

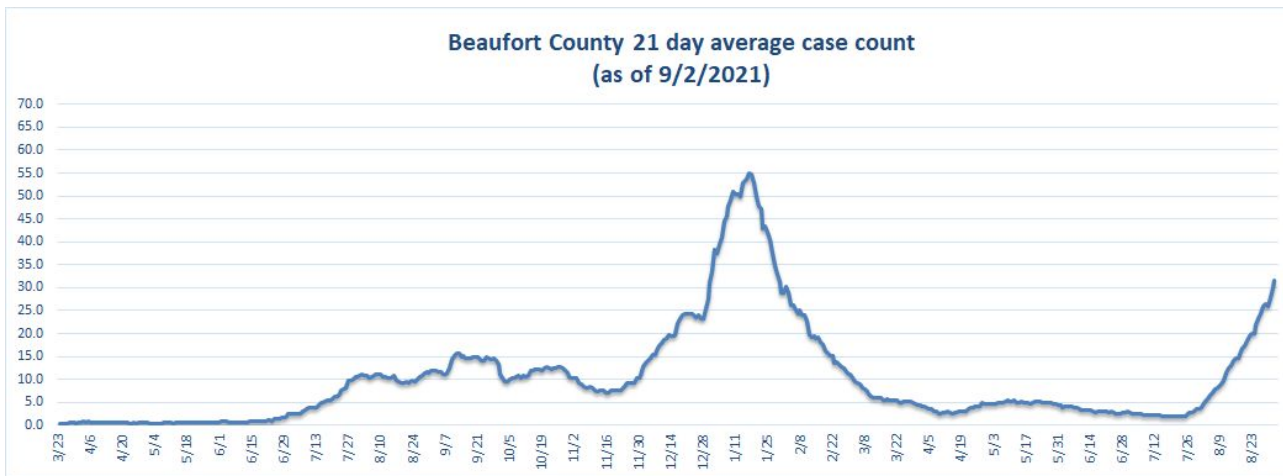
**Beaufort County daily case count timeline
(as of 9/2/2021)**



7 Day Average



21 Day Average

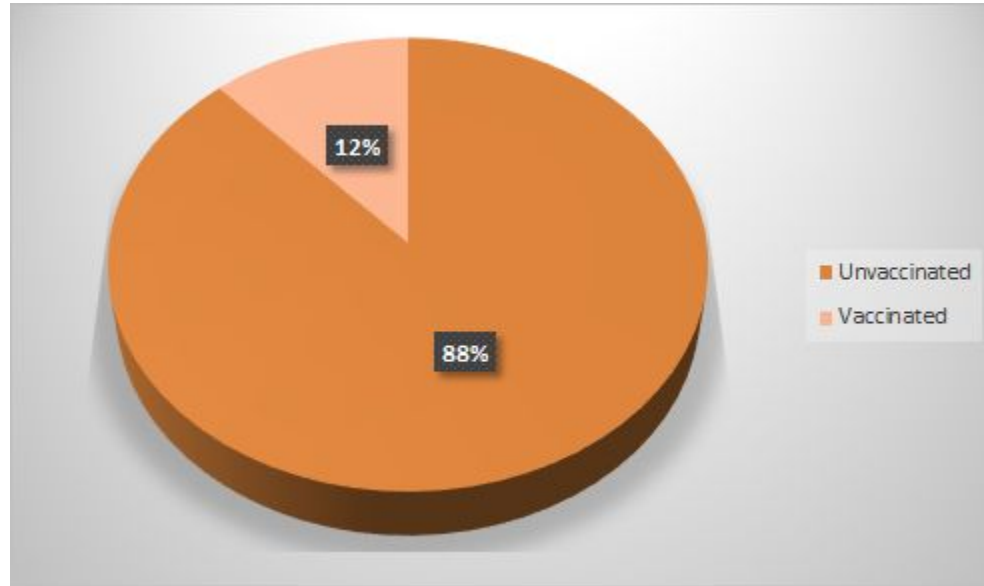


A 21 day average count reduces the weekly variability which may make it more difficult to follow the overall trend.

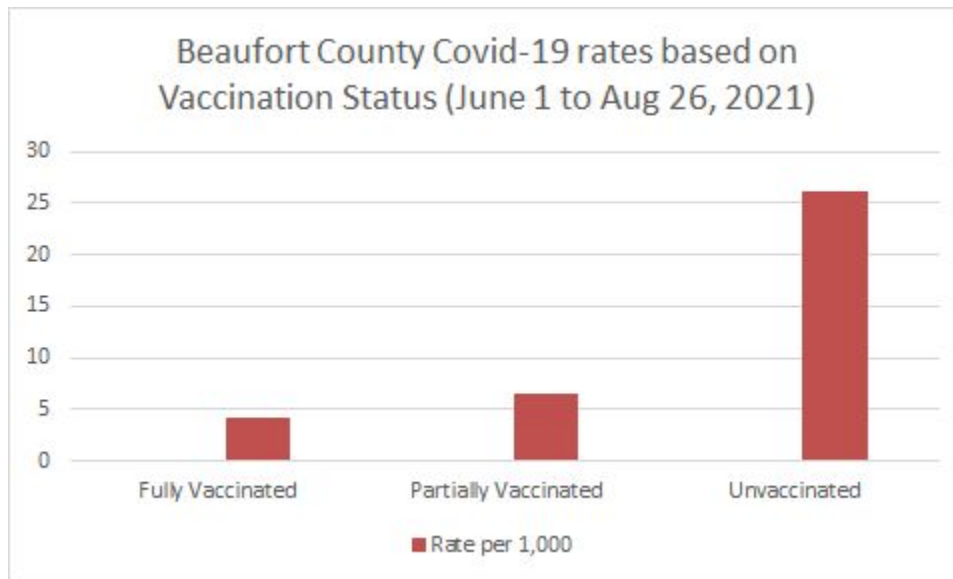
Beaufort County 7 day average case count
3/1/2021 to 9/2/2021



Vaccine Status of positive cases from June 1, 2021* to August 30, 2021



*June 1, 2021 used as starting point due to emergence of Delta Variant and first breakthrough case recorded



Beaufort County Case Rate among 1,000 population based on vaccination status

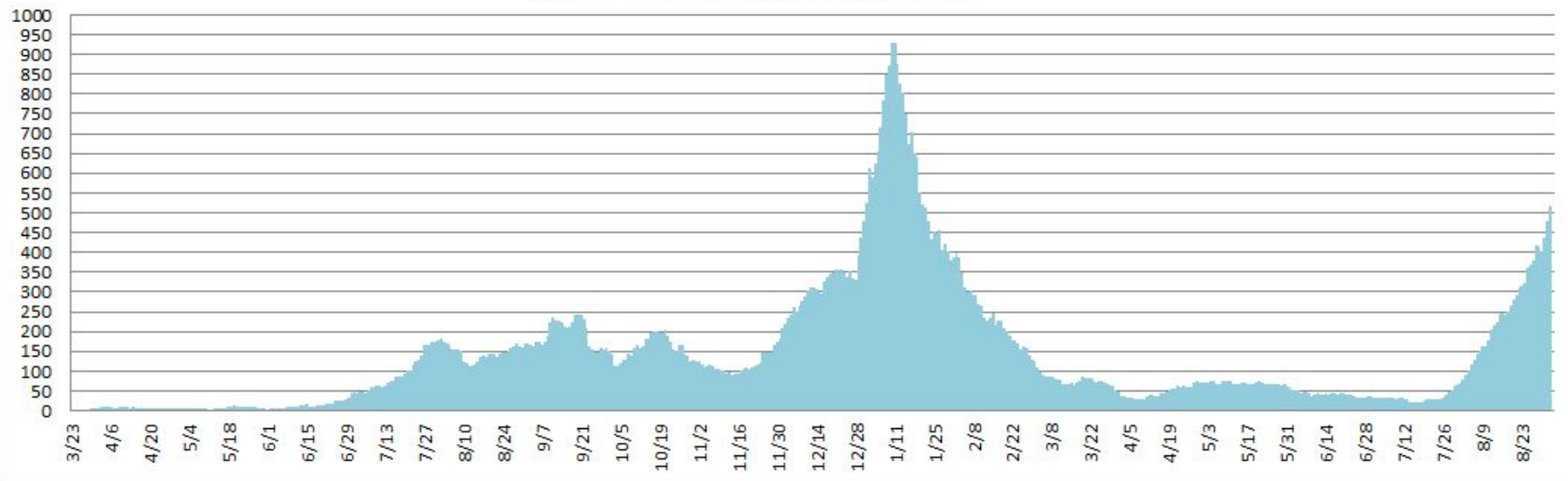
(June 1 to Aug 26, 2021)

85 Cases; 20,899 fully vaccinated population = 4.1 per 1,000 fully vaccinated people

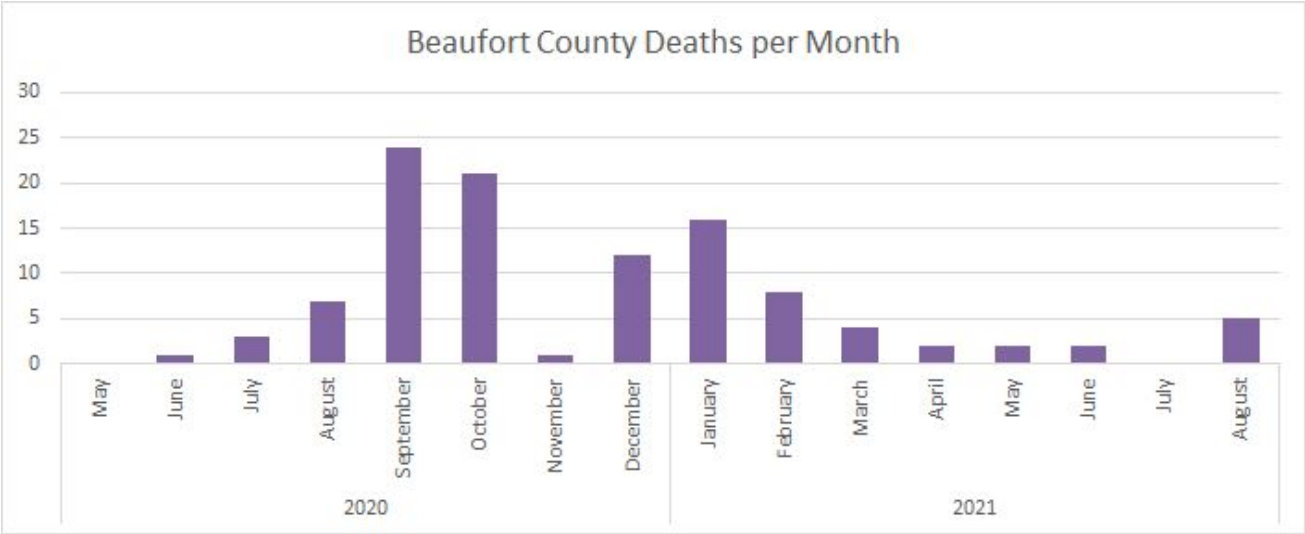
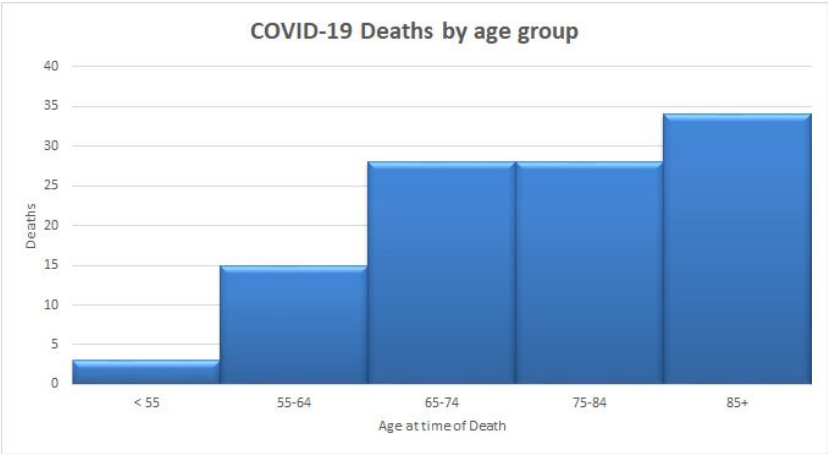
13 Cases; 2,005 partially vaccinated population = 6.5 per 1,000 partially vaccinated people

631 Cases; 24,175 unvaccinated population = 26.1 per 1,000 unvaccinated people

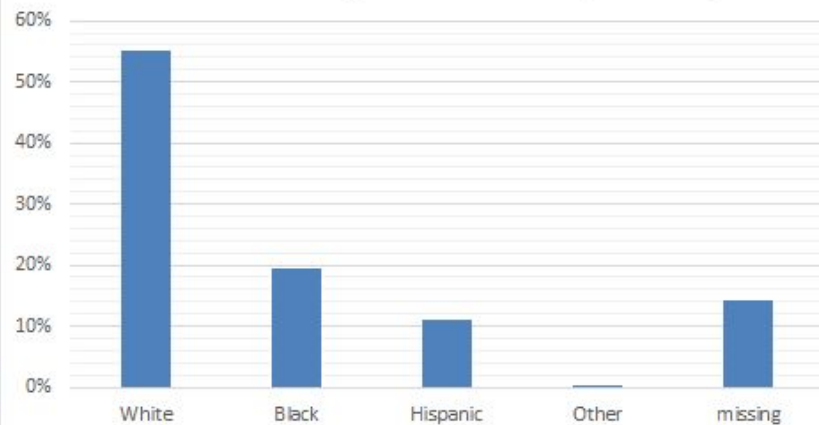
**Beaufort County daily active cases
(approximate count) (as of 9/2/2021)**



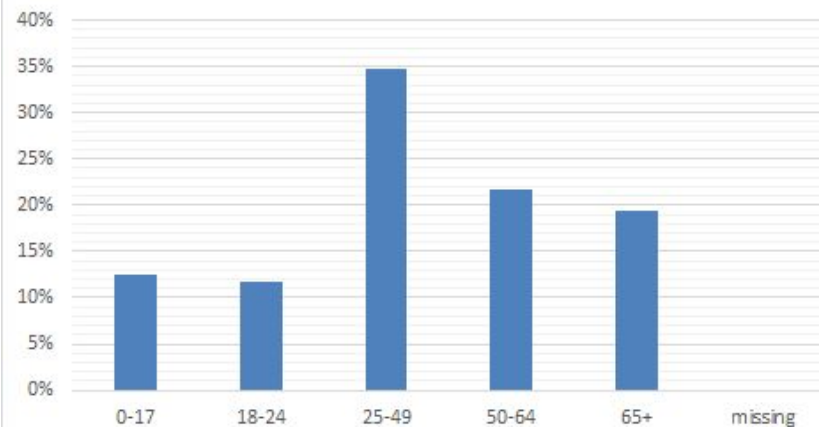
Beaufort County Deaths (108 total)



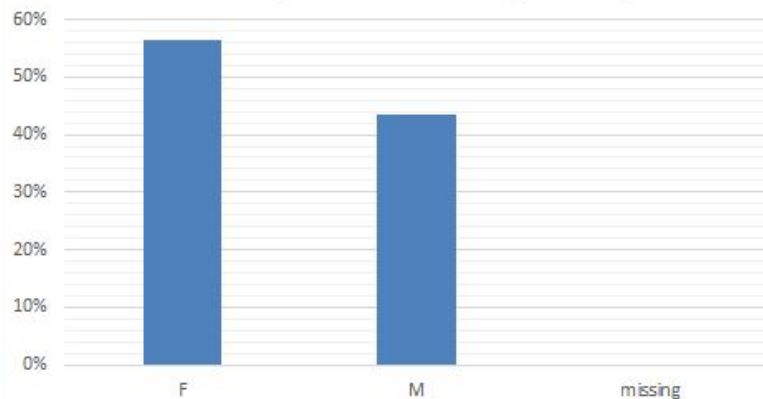
Beaufort County Cases - Race (N=5012)



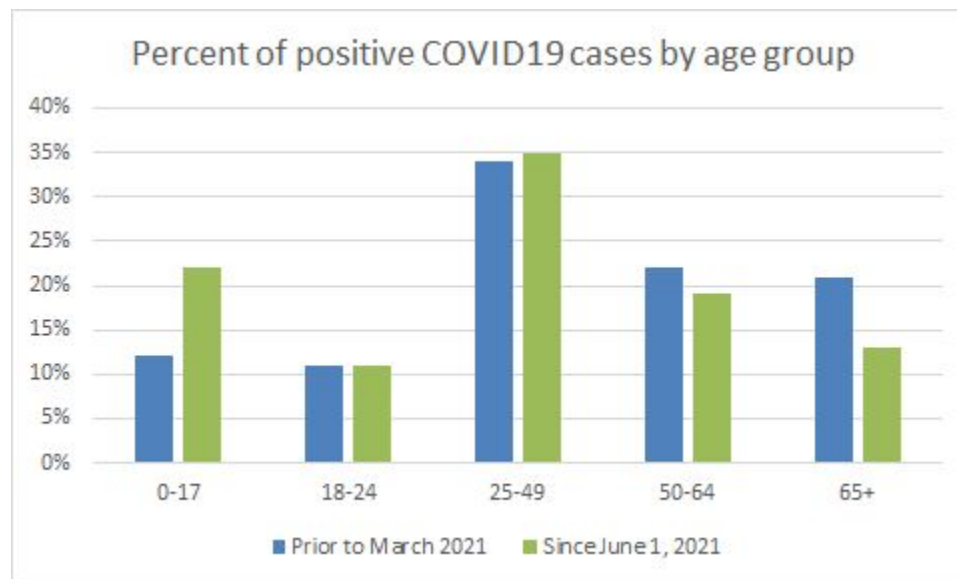
Beaufort County Cases - Age (N=5012)



Beaufort County Cases - Gender (N=5012)

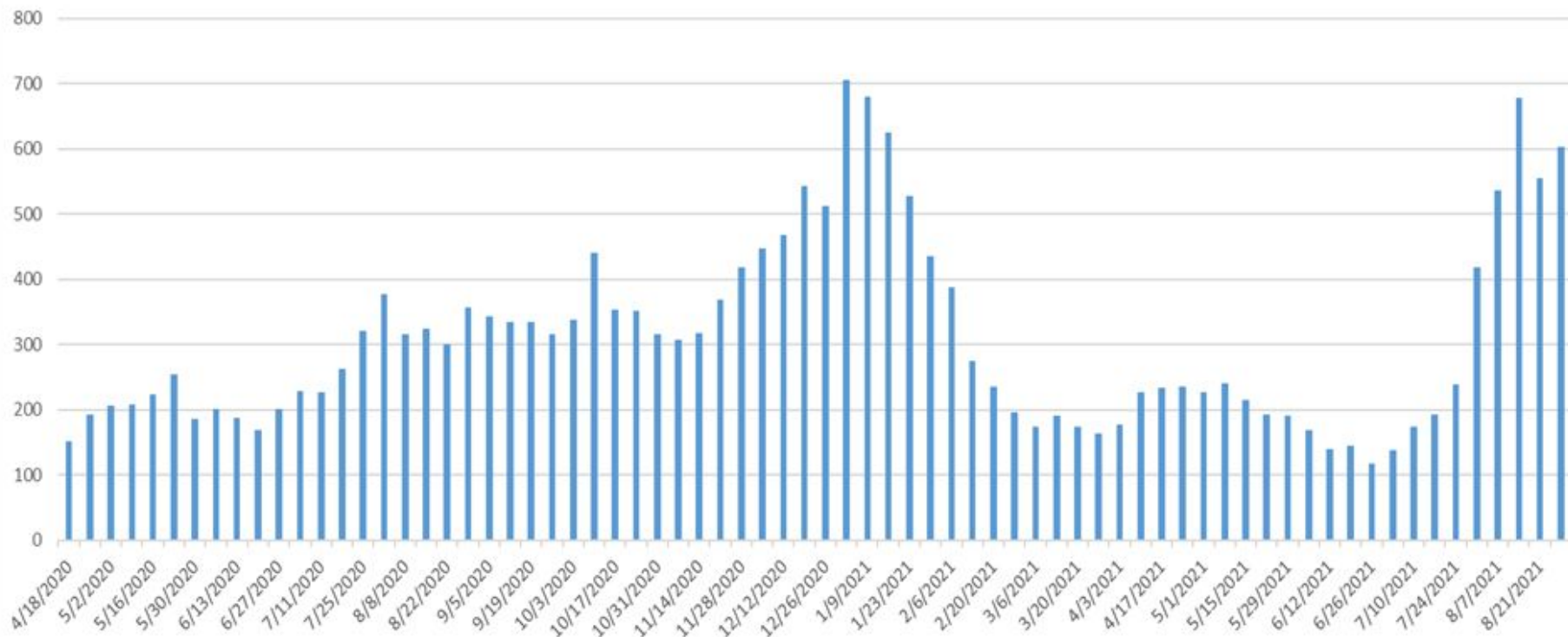


| Selected Demographic Information of positive COVID cases (N=5012) | | | | 108 | |
|---|-------|--------|---------|--------|-------|
| Expected %* | | Number | Percent | Deaths | |
| Race (ethnicity) | | | | | |
| White (non-Hispanic) | 65.9% | 2764 | 55.1% | 74 | 68.5% |
| Black (non-Hispanic) | 24.8% | 969 | 19.3% | 29 | 26.9% |
| Hispanic | 8.0% | 547 | 10.9% | 4 | 3.7% |
| Other | 1.3% | 21 | 0.4% | 1 | 0.9% |
| Unk | | 711 | 14.2% | | |
| | | | | | |
| Gender | | | | | |
| F | 52.5% | 2826 | 56.4% | 61 | 56.5% |
| M | 47.5% | 2182 | 43.5% | 47 | 43.5% |
| missing | | 4 | 0.1% | | |
| | | | | | |
| Age Cohort | | | | | |
| 0-17 | 19.6% | 622 | 12.4% | 0 | |
| 18-24 | 7.6% | 586 | 11.7% | 0 | |
| 25-49 | 22.0% | 1740 | 34.7% | 1 | 0.9% |
| 50-64 | 21.8% | 1088 | 21.7% | 17 | 15.7% |
| 65+ | 24.0% | 976 | 19.5% | 90 | 83.3% |
| Unk | | 0 | 0.0% | | |
| | | | | | |
| | | | | | |
| | | | | | |
| | | | | | |
| | | | | | |
| | | | | | |
| *2019 USCB population estimates | | | | | |



Updated: August 26, 2021

Vidant Health Covid-like Illness Syndromic Surveillance
Weekly Number of ED visits with Signs and Symptoms of Covid-19
Source: NC DETECT

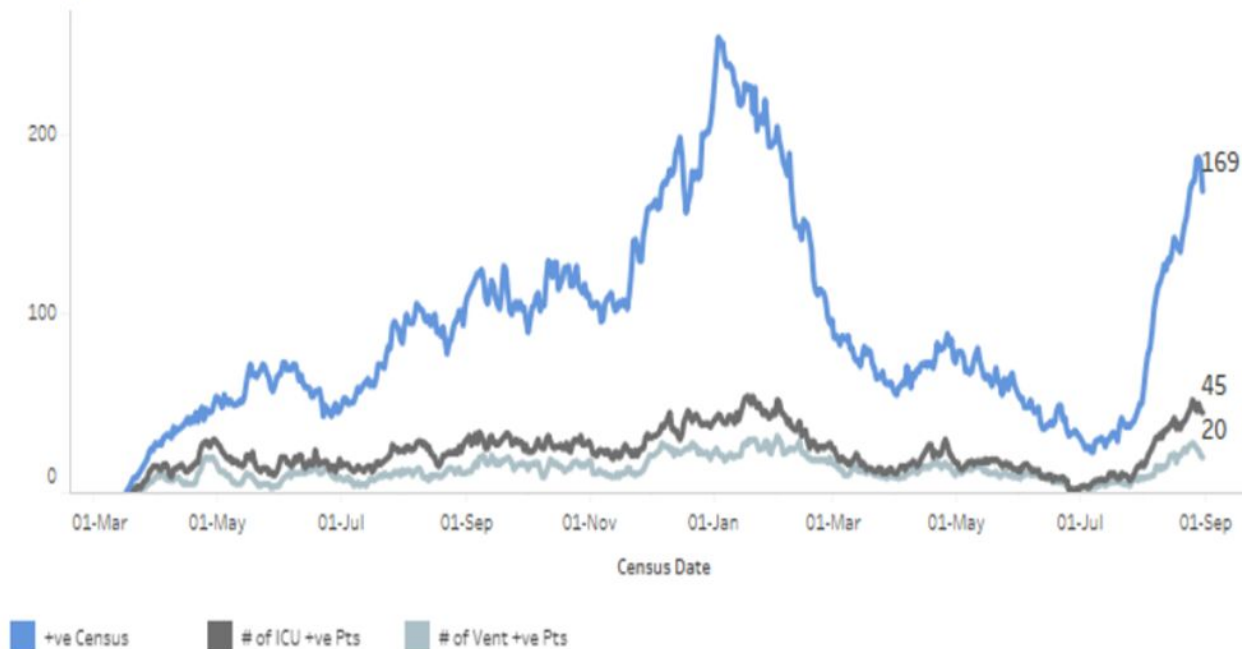


Vidant Regional Information (9 facilities total) - data released 8/24/2021

This chart is daily total number Vidant Health Covid-19 patients hospitalized.

Inpatients —
ICU —
On ventilator —

Daily Census - IP, ICU, Vent



| Variant | Count |
|--------------|--------------|
| Alpha | 745 |
| Delta | 1,028 |
| Iota | 345 |
| Other | 1,152 |
| Total | 3,477 |

