



It is our mission to protect your health, but we need you to do your part.

COVID-19 Surveillance Data

Beaufort County Health Department

1436 Highland Drive, Washington, North Carolina 27889

252.946.1902

Updates are generally completed daily during the work week though some data is compiled weekly or monthly.



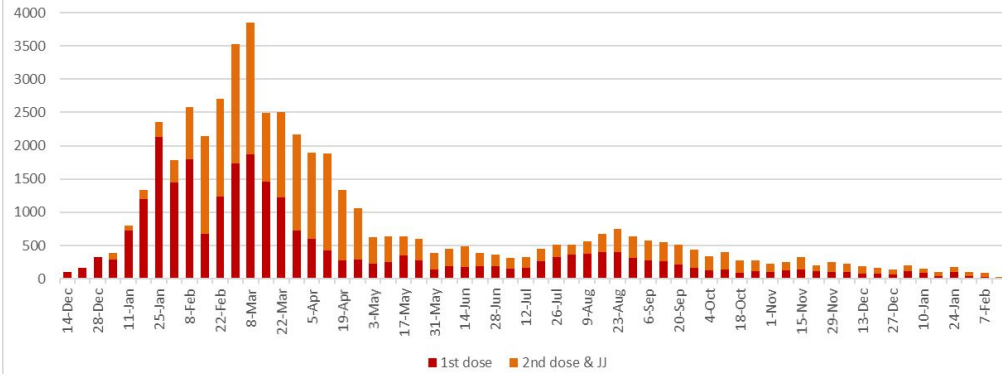
| Tuesday, March 1, 2022 | | |
|--|-------------|-------|
| Tests conducted on Beaufort county residents (to date) | 75,377 | |
| Total cases (tested positive) | 12,662 | |
| Total hospitalizations that have occurred | 451 | 3.6% |
| Total Deaths* | 152 | 1.2% |
| Average age of deaths (years) | 74.6 | |
| Known active cases currently in the county | 389 | |
| Currently hospitalized | 5 | 1.3% |
| Currently on a ventilator | - | |
| Total cases recovered | 12,121 | 95.7% |
| Seven (7) day average case rate | 16.3 | |
| Positive cases June 1 to Dec 31 (2021)** | 3,447 | |
| Breakthrough (positive after completing vaccination)** | 663 | 19% |
| Positive cases since Jan 1, 2022 (Omicron influence)*** | 4,551 | |
| Breakthrough (this data lags behind case count) | 1,624 | 36% |
| Deaths* from long term care facilities | 58 | 38% |
| <p>*Deaths reported through this website have been confirmed through a review of the death certificates. This validation process can sometimes take a long time when a resident passes in another County or State. Other sources may report presumptive totals and therefore will vary with those reported here.</p> | | |
| <p>**June 1, 2021 is used as a starting point due to first breakthrough case and start of Delta Variant detected in area.</p> | | |
| <p>***This period is used to determine influence of Omicron Variant on County</p> | | |

COVID-19 Vaccination Information:

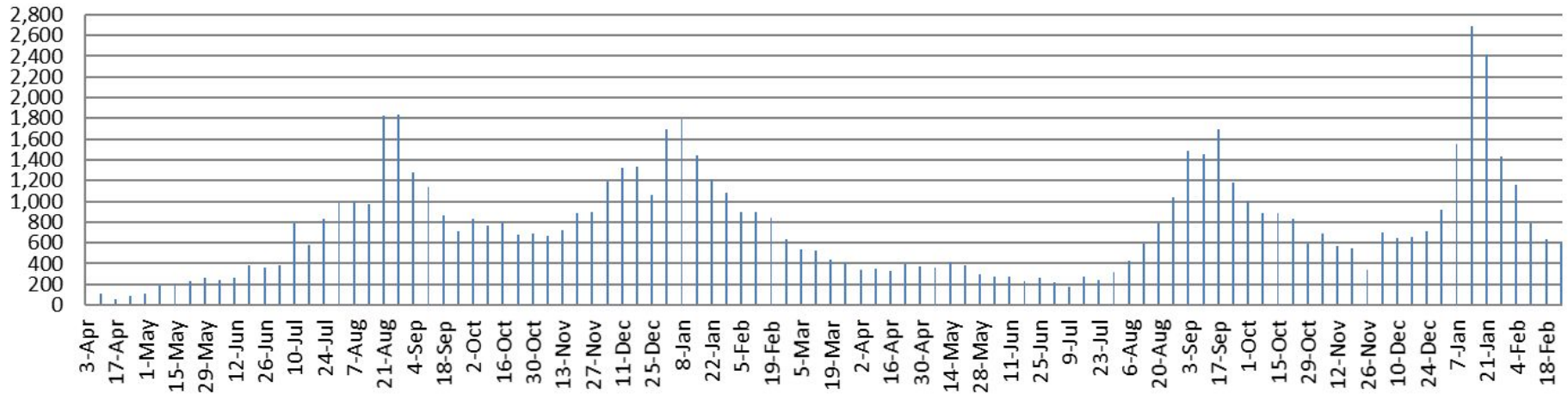
[Click Here for more Information on the COVID Vaccination](#)

| Tuesday, March 1, 2022 | | Total |
|---|--------|--------|
| Beaufort County Population (NCSCHS) | | 47,079 |
| Residents that are partially vaccinated against COVID-19 | 27,022 | 57.4% |
| Completed COVID-19 vaccine series (all vaccines) | 25,352 | 53.8% |
| Received extra dose or has been given a booster | 12,531 | |
| Population over 65 years of age (NCSCHS) | 11,281 | |
| Over 65 that have received first dose of COVID-19 vaccine | 10,757 | 95.4% |
| Over 65 that have completed series | 10,338 | 91.6% |
| Adult Population (18 and older) | 37,758 | |
| Partially vaccinated | 25,624 | 67.9% |
| Fully vaccinated | 24,172 | 64.0% |
| 12-17 year olds vaccinated | 3,295 | |
| Partially vaccinated | 1,023 | 31.0% |
| Fully vaccinated | 886 | 26.9% |
| 5-11 year olds vaccinated | 3,604 | |
| Partially vaccinated | 375 | 10.4% |
| Fully vaccinated | 294 | 8.2% |

Vaccinations Received by Beaufort County Residents per Week



Beaufort County Number of Tests Conducted (weekly totals) as of 2/25/2022



This data is usually compiled on Monday for the previous week's count.



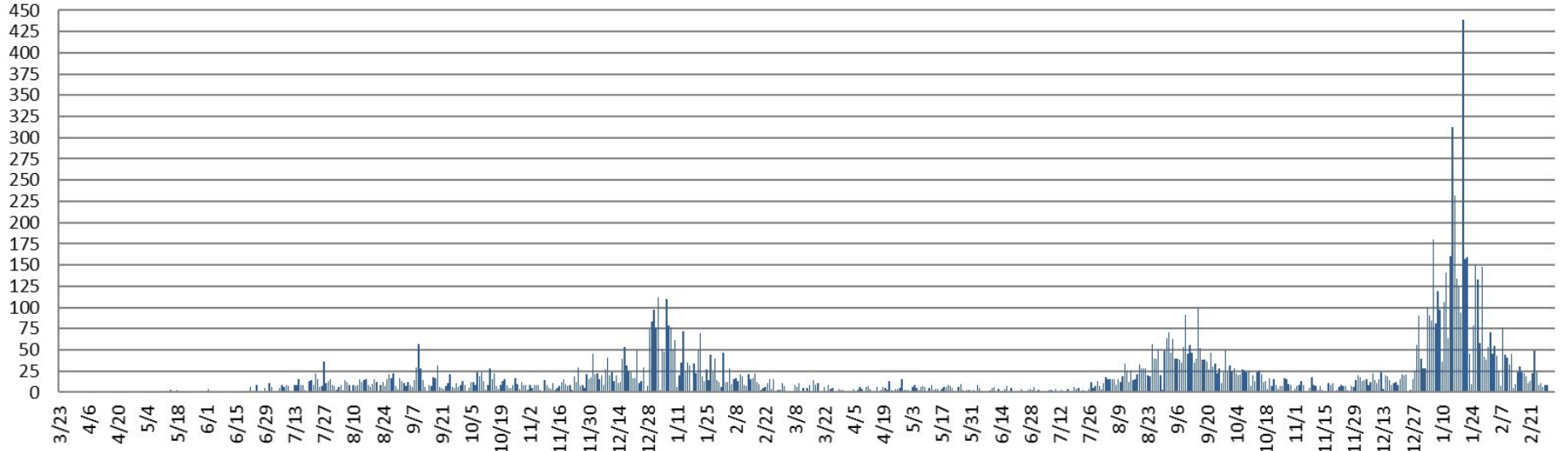
For the week ending February 25th:
15.0% of the 593 residents, tested in Beaufort County,
tested positive.

**Beaufort County Percent of Tests Resulting as Positive
(Calculated weekly) as of 2/25/2022**



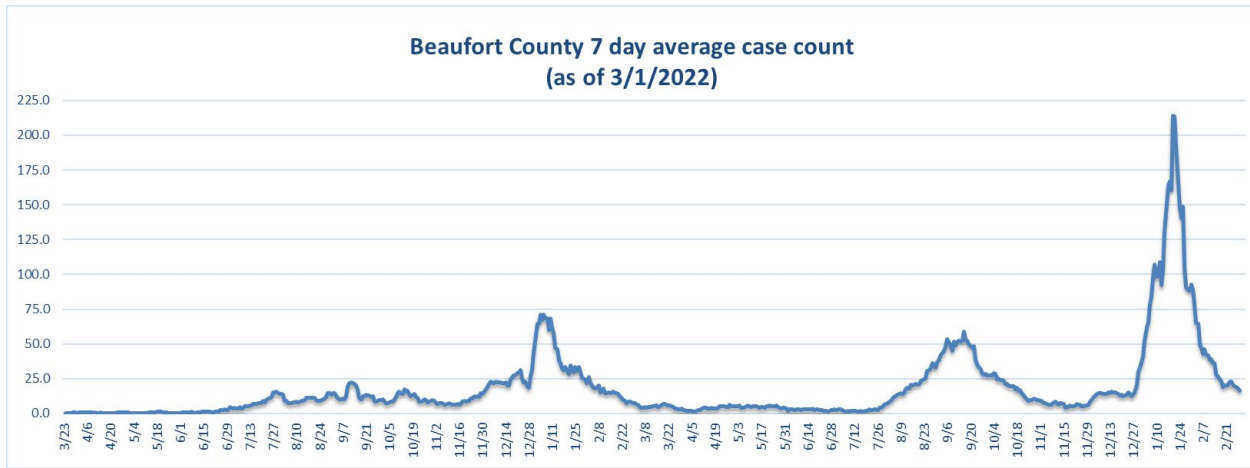
This data is usually compiled on Monday for the previous week's count.
Only tests conducted in the county and results known.

Beaufort County daily case count timeline (as of 3/1/2022)

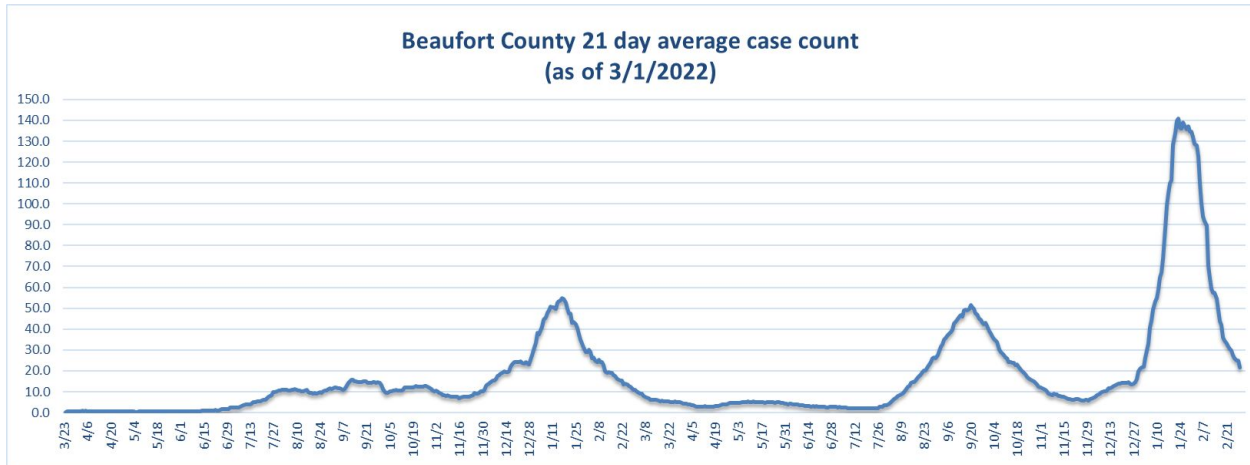




7 Day Average



21 Day Average

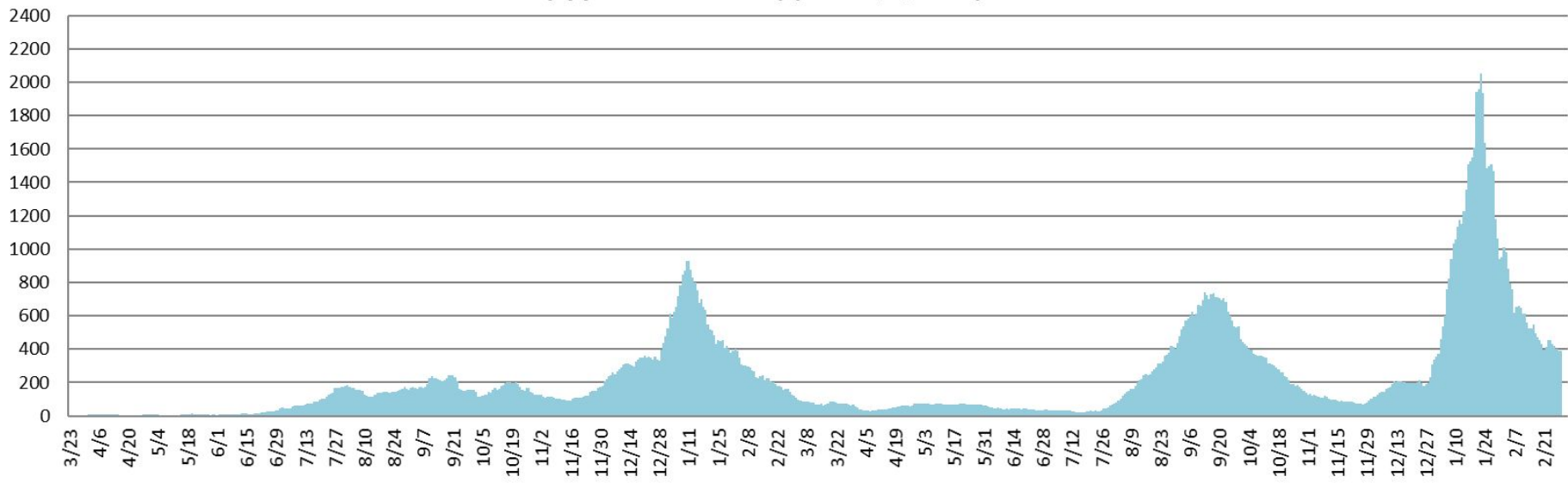


A 21 day average count reduces the weekly variability which may make it more difficult to follow the overall trend.

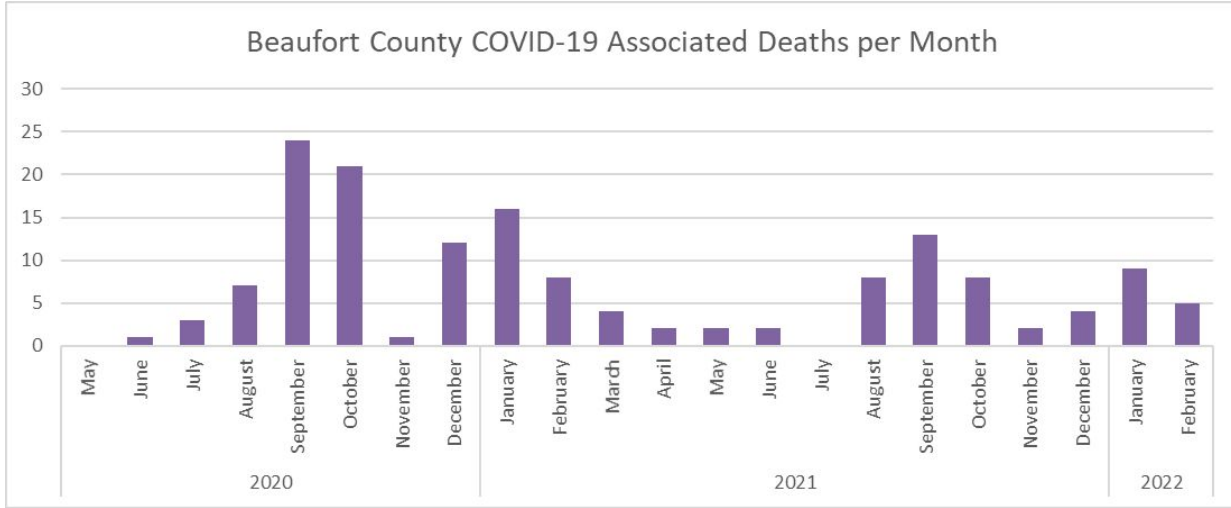
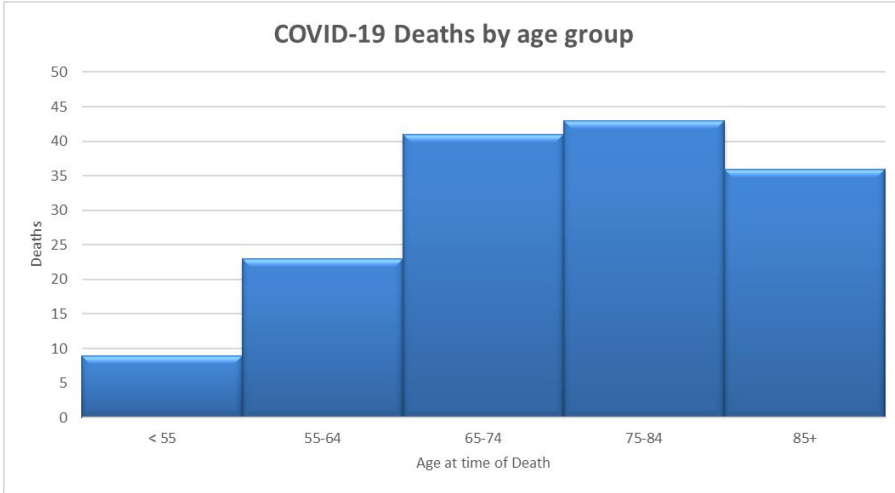
Beaufort County 7 day average case count 7/1/2021 to 3/1/2022



**Beaufort County daily active cases
(approximate count) (as of 3/1/2022)**



Beaufort County Associated Deaths (152 total)

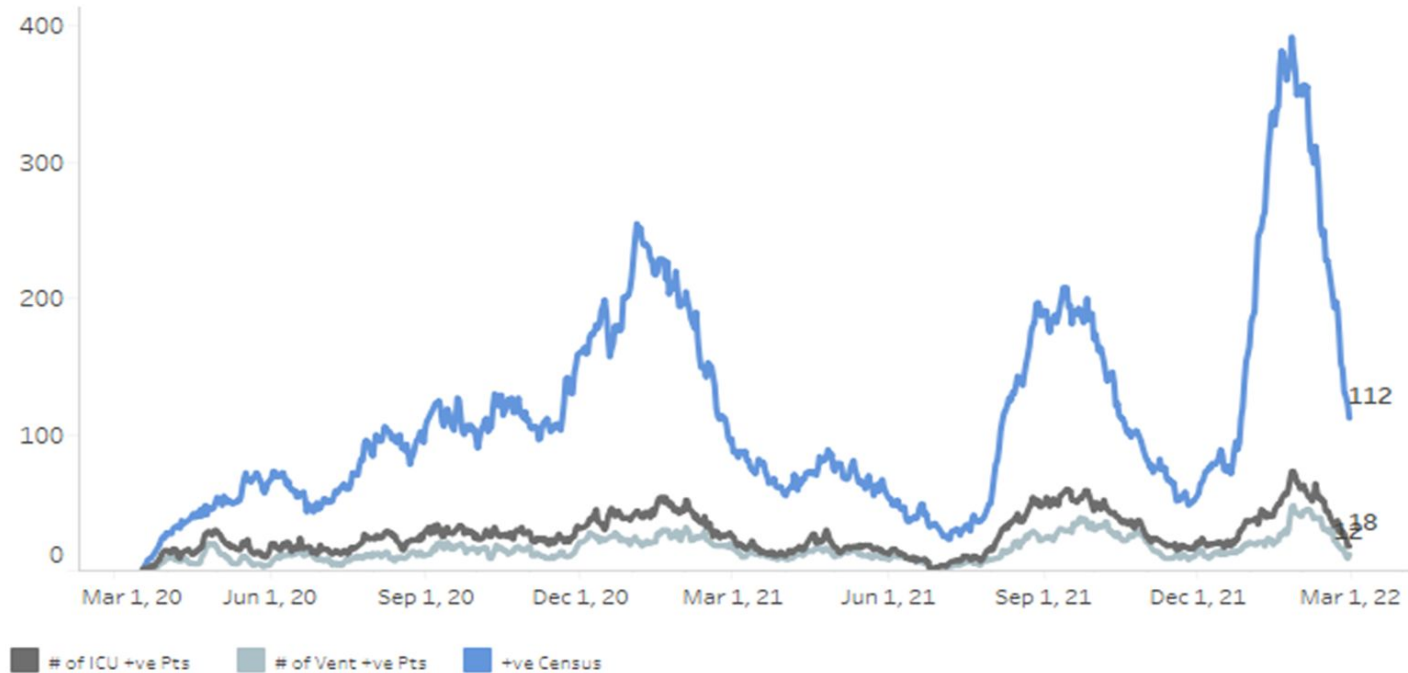


Vidant Regional Information (9 facilities total) - data released 2/22/2022

This chart is daily total number Vidant Health Covid-19 patients hospitalized.

Inpatients —
ICU —
On ventilator —

Daily Census - IP, ICU, Vent



Variants by %

