

# Coastal Flooding, Heavy Rain, and Wind Threats Through Sunday

Decision Support Briefing # 4  
As of: 600 AM Friday, May 26<sup>th</sup>, 2023




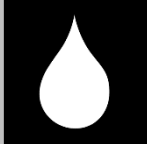
Briefing applies to the  
Morehead City/Newport, NC  
Area Only



## What Has Changed?

- *High Surf Advisory was extended to Ocracoke Island*

# Main Points

Hazard	Impacts	Location	Timing
<b>Coastal Flooding</b> 	<p><b>Coastal Flooding:</b> Elevated water levels, Inundation of low lying areas (see maps for specifics)</p> <p><b>Ocean Overwash:</b> Large, dangerous surf is expected, leading to beach erosion and some overwash in vulnerable areas</p>	<p><b>Soundside Coastal Flooding:</b> Southwest Pamlico Sound, Neuse, Bay and Pamlico Rivers and tributaries</p> <p><b>Oceanside Overwash:</b> Some overwash Oregon Inlet to Cape Hatteras</p>	<p><b>Coastal Flooding:</b> Moderate to locally major impacts tonight through early Monday</p> <p><b>Ocean Overwash:</b> Around the times of high tides today through late Saturday night</p>
<b>Rainfall Amounts</b> 	<p>Travel impacts and flooding of poor drainage areas</p>	<p>All of Eastern NC but especially from along the Crystal Coast from Morehead City westward.</p>	<p>Heaviest rain falls from tonight through early Sunday morning</p>
<b>Winds</b> 	<p>Isolated power outages, small limbs down, hazardous driving conditions for high-profile vehicles</p>	<p>Outer Banks, Crystal Coast and along and near the Pamlico/Albemarle Sounds</p>	<p>Strongest winds from this morning through Saturday evening</p>
<b>Marine &amp; Rip Currents</b> 	<p>Large, dangerous seas Gale to Storm Force winds will produce life-threatening conditions to mariners</p>	<p>All marine areas, with strongest winds coastal waters south of Cape Hatteras</p>	<p>Through at least Monday</p>

# Summary of Greatest Impacts



## Coastal Flooding: See Maps to Follow



## Rainfall/Flooding: See Maps to Follow



## Wind: See Maps to Follow



## Marine: All Marine Areas

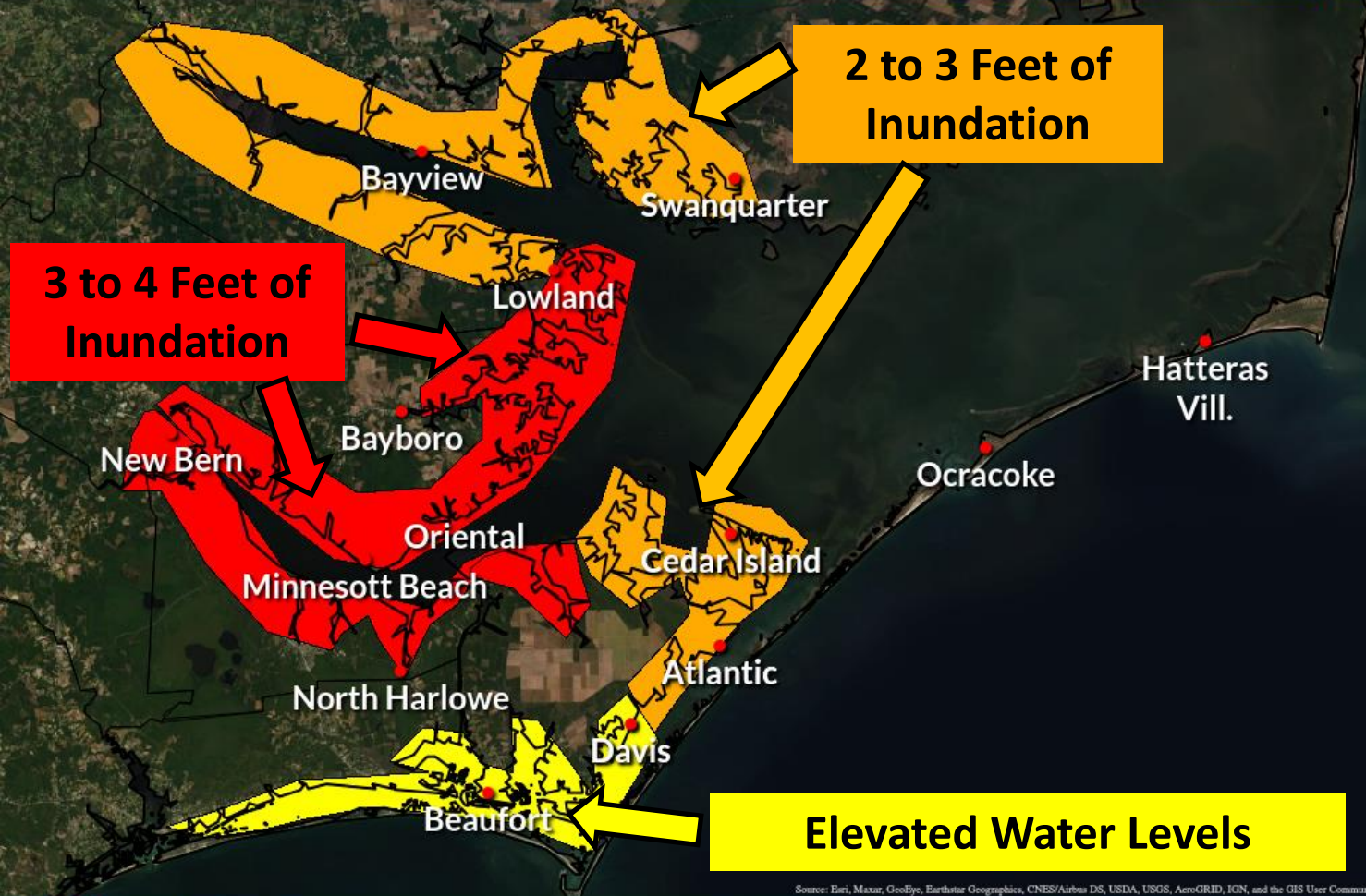




# Coastal Flooding

Through Early Sunday Morning

Weather Forecast Office  
Newport/Morehead City, NC



Source: Esri, Maxar, GeoEye, Earthstar Geographics, CNES/Airbus DS, USDA, USGS, AeroGRID, IGN, and the GIS User Community

**Impacts:**  
 Flooding expected in low lying areas near the river/sounds. Some road closures possible.

**Greatest Concern:**  
 Neuse River/Pamlico Sound (areas in red)

**Timing:**  
 Today through early Sunday morning

@NWSMoreheadCity

weather.gov/moreheadcity



# Coastal Flooding (Oceanside Only)

Through Early Sunday Morning

Weather Forecast Office  
Newport/Morehead City, NC



**Elevated Water Levels**

## Impacts:

Minimal overall. Some beach erosion, minor ocean overwash possible at periods of high tide (especially on Hatteras Island)

## Timing:

Today through early Sunday morning

Source: Esri, Maxar, GeoEye, Earthstar Geographics, CNES/Airbus DS, USDA, USGS, AeroGRID, IGN, and the GIS User Community

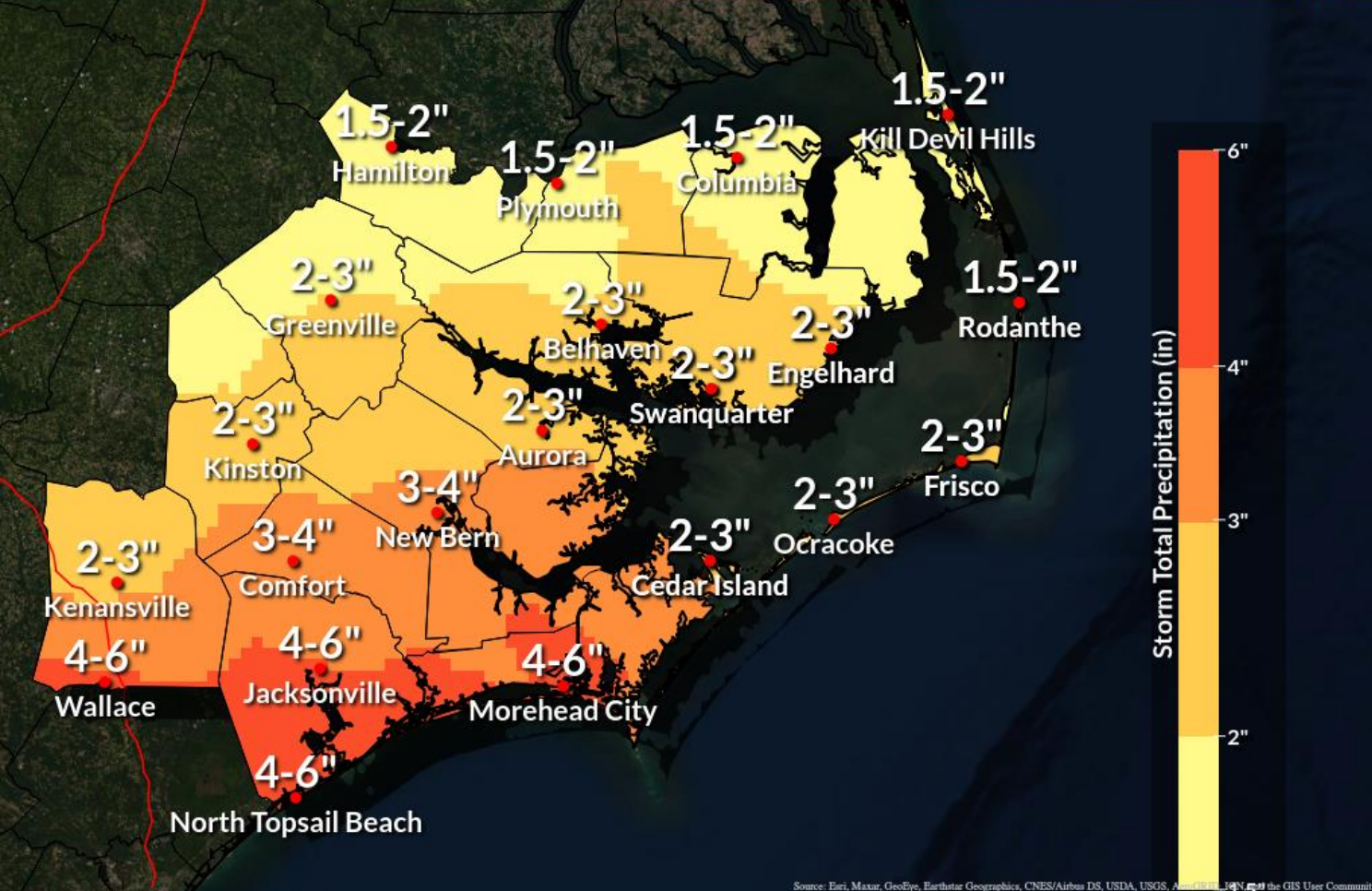
@NWSMoreheadCity

[weather.gov/moreheadcity](http://weather.gov/moreheadcity)

# Total Rainfall Through Monday

Heaviest rain expected Saturday morning through Sunday afternoon

Weather Forecast Office  
Newport/Morehead City, NC  
Issued May 26, 2023 3:38 AM EDT



Source: Esri, Maxar, GeoEye, Earthstar Geographics, CNES/Airbus DS, USDA, USGS, AeroGRID, IGN, and the GIS User Community

@NWSMoreheadCity

weather.gov/moreheadcity

**Impacts:**  
Flooding possible in low lying, poor drainage areas

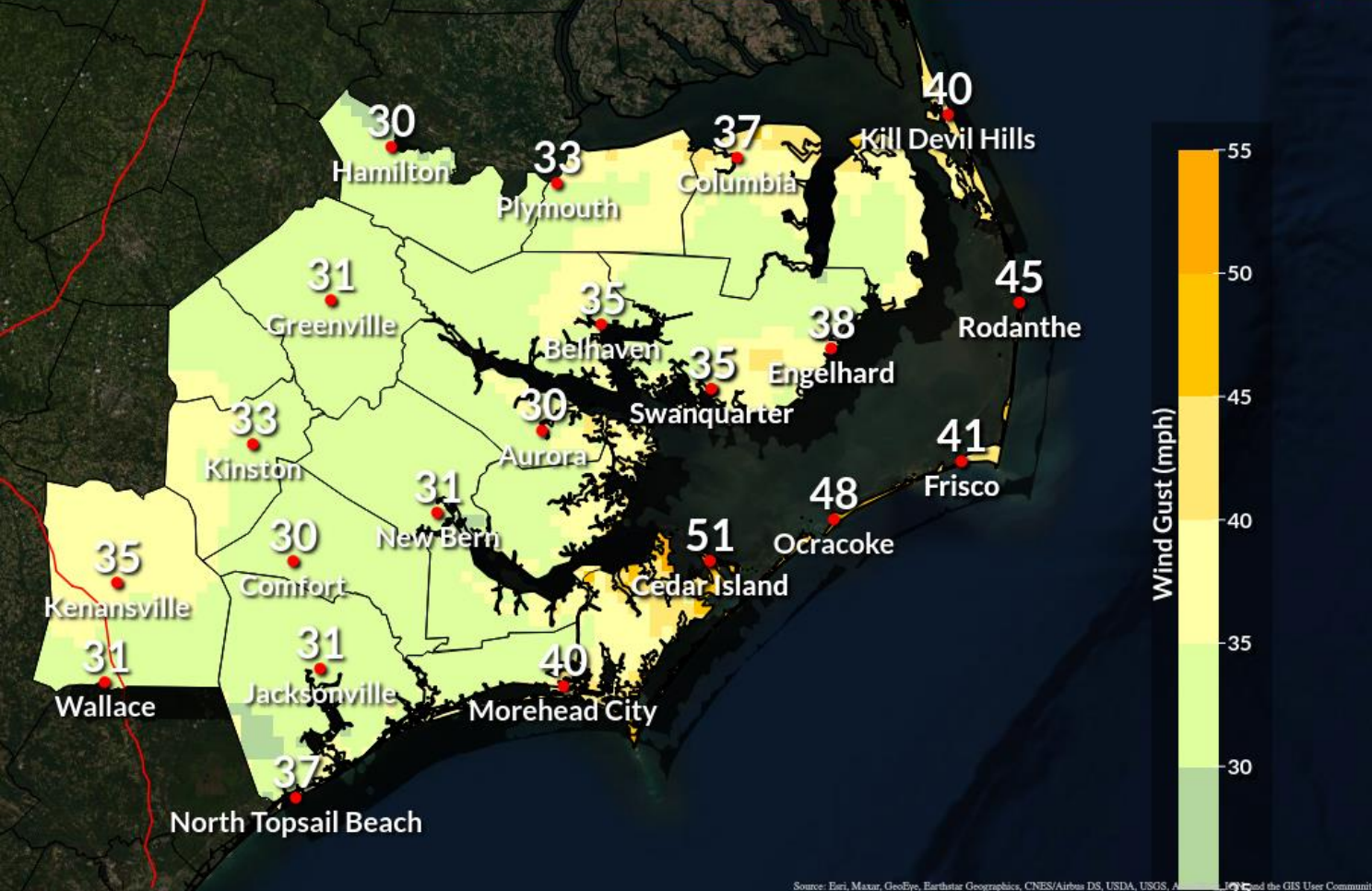
**Greatest Concern:**  
Along the southern coast from Morehead City westward, including south Duplin

**Timing:**  
Heaviest rain falls tonight through early Sunday morning

# Peak Wind Gusts

Today through Saturday

Weather Forecast Office  
Newport/Morehead City, NC  
Issued May 26, 2023 3:41 AM EDT



Source: Esri, Maxar, GeoEye, Earthstar Geographics, CNES/Airbus DS, USDA, USGS, AeroGRID, IGN, and the GIS User Community

@NWSMoreheadCity

weather.gov/moreheadcity

## Impacts:

Isolated power outages possible, small limbs down, difficulty driving (high profile vehicles)

## Greatest Concern:

Outer Banks, Crystal Coast, Along and near Pamlico/Albemarle Sounds

## Timing:

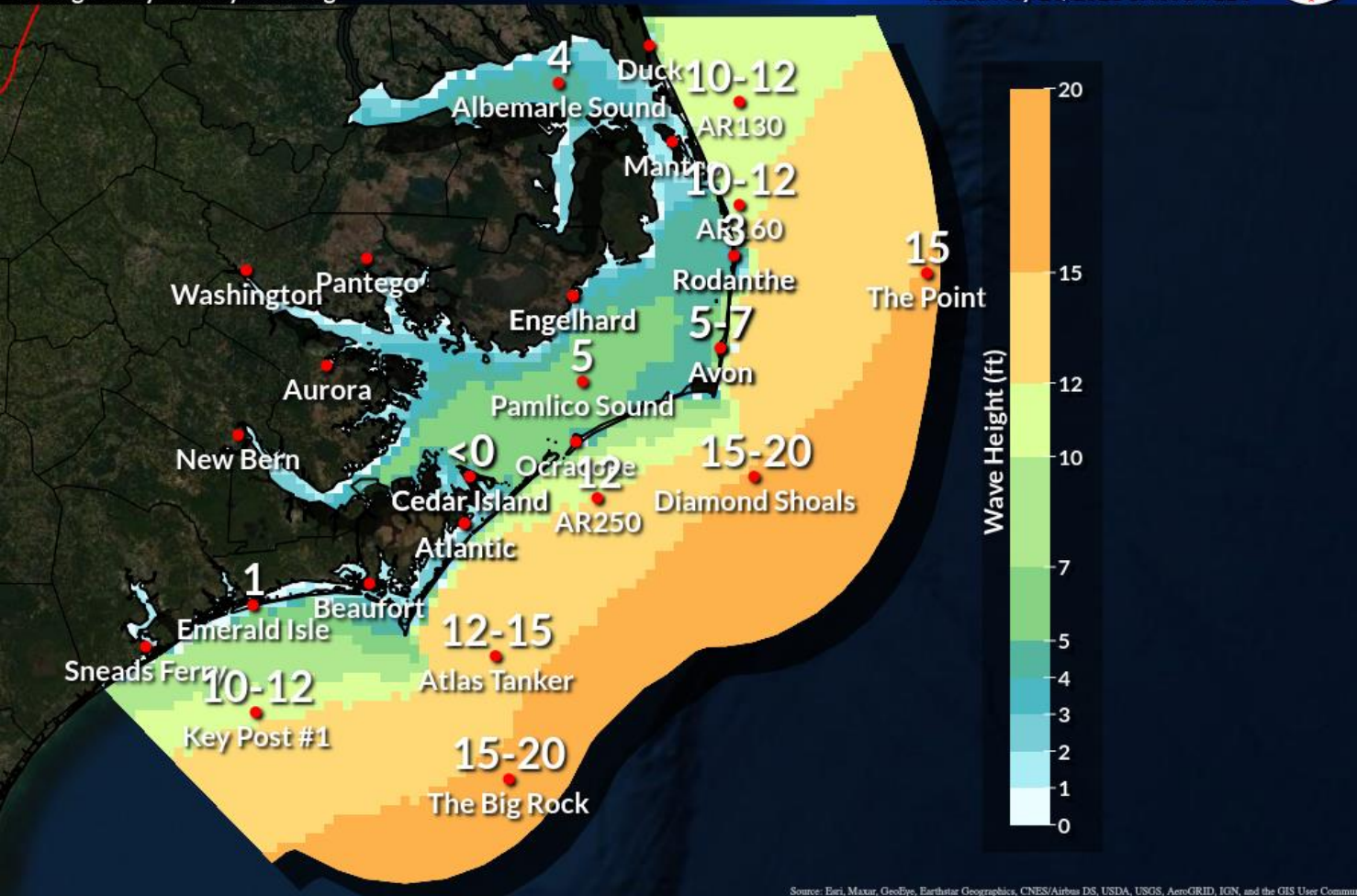
Strongest winds this afternoon through Saturday evening



## Maximum Wave Heights

Through early Sunday morning

Weather Forecast Office  
Newport/Morehead City, NC  
Issued May 26, 2023 3:46 AM EDT



Source: Esri, Maxar, GeoEye, Earthstar Geographics, CNES/Airbus DS, USDA, USGS, AeroGRID, IGN, and the GIS User Community

### Impacts:

Life threatening seas which could capsize or damage vessels. Mariners should alter plans to avoid these hazardous conditions

### Greatest Concern:

All coastal waters

### Timing:

Worst conditions late this afternoon through early Sunday morning

@NWSMoreheadCity

[weather.gov/moreheadcity](http://weather.gov/moreheadcity)



# Rip Current Risk

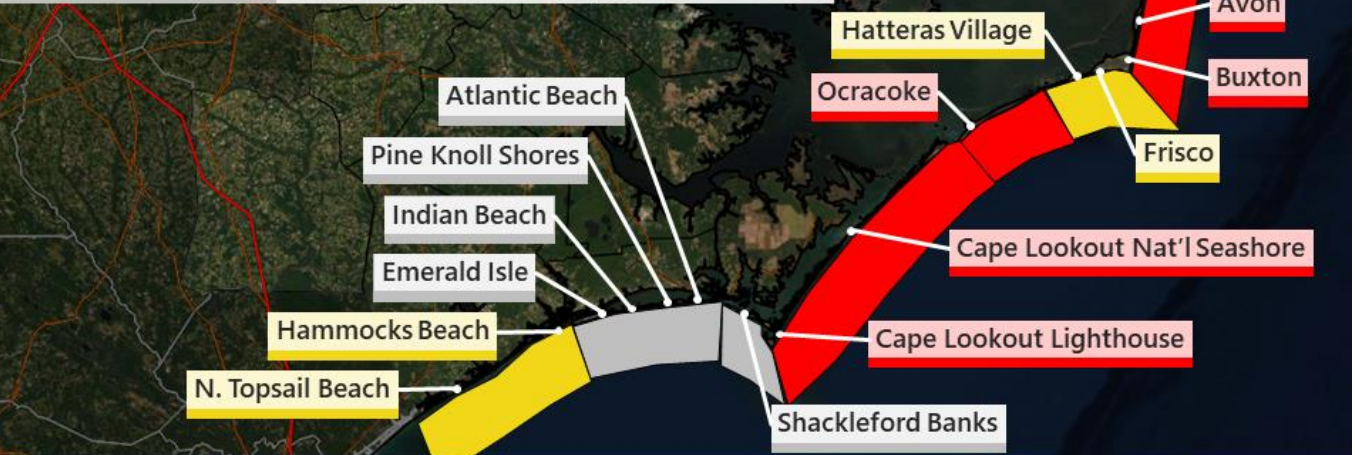
Weather Forecast Office  
Newport/Morehead City, NC



Forecast for Friday May 26, 2023

High Rip Current Risk North of Cape Lookout Today

<b>HIGH</b>	Life-threatening rip currents are likely in the surf zone.
<b>MODERATE</b>	Life-threatening rip currents are possible in the surf zone.
<b>LOW</b>	The threat for rip currents is low. However, life-threatening rip currents may occur in the vicinity of jetties and piers.



**Impacts:**  
Rough surf, large breaking waves and threats for rip currents will make surf conditions dangerous through the weekend



Updated Surf Forecasts: [weather.gov/beach/mhx](http://weather.gov/beach/mhx)

# Event Summary

✓ Confidence is **HIGH** that this event will occur, and we are expecting **MODERATE** impacts especially toward the coast.

**Coastal Flooding:** Flooding likely along Neuse, western Pamlico Sound over multiple days through late Saturday night (3 to 4 feet of inundation). 2 to 3 feet across Downeast Carteret County. Elevated water levels along Bogue Sound, due to persistent strong wind.



**Ocean Overwash:** Large, dangerous surf and some beach erosion is expected for beaches from Duck to Cape Lookout. Some ocean overwash is possible for vulnerable areas on Hatteras Island. This is expected to be minor.



**Rainfall:** A minimum of 1 to 2 inches of rain across all of eastern North Carolina, but up to 4 to 6 inches towards the Crystal Coast.



**Winds:** Windy conditions could cause isolated power outages, bring a few limbs down and result in hazardous driving conditions for high-profile vehicles.



**Life-threatening Marine Conditions:** Dangerous seas of up to 15-20 feet with Gale Force winds expected, peaking late this afternoon through early Sunday morning.

# Contact and Next Briefing Information



The next briefing will be sent out by 5 PM Friday 5/26/2023



[Briefing Webpage](#)



**Web:**

<http://www.weather.gov/mhx/>



**Phone (public):**

(252) 223-5737 ext. 6



**E-mail:**

[wxobs.mhx@noaa.gov](mailto:wxobs.mhx@noaa.gov)



**Facebook:**

[NWS Newport/Morehead City](#)



**Twitter:**

[@NWSMoreheadCity](#)



**YouTube:**

[NWSMoreheadCity](#)